

ALUMINUM BANQUET CHAIR

FINE DINING SERIES



DARCY
Model # HC-5428



Overall Height	37.5"	Stacks	10 High
Overall Width	18.75"	Seat Height	18.5"
Overall Depth	24.25"	Seat Width	16"
Arm Height	N/A	Seat Depth	18.5"
Weight	19.5 Lbs.	C.O.M. Seat/Back	0.95 yd (0.45 / 0.65)

Standard Features

- Includes French Seam Triple Stitch design
- Completely welded aluminum alloy tubing
- No exposed fasteners
- Includes Molded Foam Ergonomic Seat Cushion
- 12 Year Warranty
- 500 Lb. Weight Capacity
- Meets CAL TB 117 fire rating
- Choose from 30 different powdercoat finishes or 20 different wood-grain finishes
- Optional Webbed Seating, Ganging and Flex-Back

Description

Instantly recognizable for its sleek, modern look, Darcy calls attention to itself for its uniqueness. With its sharp lines, an open portal back and decorative stitching on the inside back, Darcy is a stylish choice. This lightweight, aluminum framed, flex-back chair comes with an ergonomic molded-foam seat.



Visit Us Online
www.shevchair.com

SHEV
 CHAIR

Manufacturers of Contract Hotel Furnishings
 4800 W. Roosevelt Road, STE 201 - Chicago, IL 60644
 OFFICE: (888) 532-3910 FAX: (773) 261-2808
 Email: SALES@SHEVCHAIR.COM

DARCY

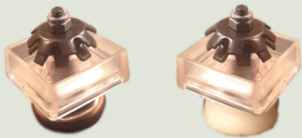
Model # HC-5428

Shown with
Premium Option
Endo-Flex Back



Shown with
Premium Option
Ergo-Stitch Seat

Standard Dual Umbrella
Metal or Nylon
Booted Swivel Glides

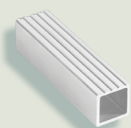


Premium Option
Webbed Seat

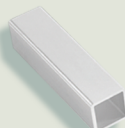


Frame Tubing Options

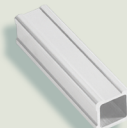
#09 FLUTE



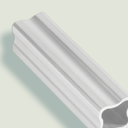
#03 FLAT



#06 QUAD



#08 CONTOUR





SHEV CHAIR

Visit Us Online
www.shevchair.com

Manufacturers of Contract Hotel Furnishings
4800 W. Roosevelt Road, STE 201 - Chicago, IL 60644
OFFICE: (888) 532-3910 FAX: (773) 261-2808
Email: SALES@SHEVCHAIR.COM