



**ALEXANDER**  
Model # HC-5301

# ALUMINUM SIDE CHAIR

## 10-HIGH SERIES



Overall Height	33.65"	Stacks	10 High
Overall Width	18"	Seat Height	18.25"
Overall Depth	23.5"	Seat Width	15.5"
Arm Height	N/A	Seat Depth	18.5"
Weight	15 Lbs.	C.O.M. Seat/Back	1 yd (0.5 / 0.5)

### Standard Features

- Includes side stack bars for added support
- Completely welded aluminum alloy square tubing
- No exposed fasteners
- 12 Year Warranty
- Metal self leveling booted swivel glides
- Meets CAL TB 117 fire rating
- Includes decorative laser back
- Optional Retractable Ganging
- Leg on leg stacking with 10 stack bumpers
- Optional Lumbar Support

### Description

If you're looking for a more avant-garde feel to your chair options, Alexander delivers. With its laser-cut back design, flared back legs and thick tubing, the chair is unusually stylish. Only 15 lbs. the Alexander is both lightweight and durable, and can stack 10 high.



Visit Us Online  
[www.shevchair.com](http://www.shevchair.com)

**SHEV**  
 CHAIR

Manufacturers of Contract Hotel Furnishings  
 4800 W. Roosevelt Road, STE 201 - Chicago, IL 60644  
 OFFICE: (888) 532-3910 FAX: (773) 261-2808  
 Email: SALES@SHEVCHAIR.COM

# ALEXANDER

Model # HC-5301

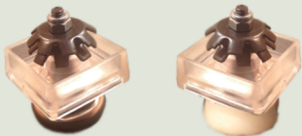
Available with  
Premium Option  
Endo-Flex Back



Laser-Cut Back  
Design Detail



Standard Dual Umbrella  
Metal or Nylon  
Booted Swivel Glides

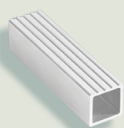


Premium Option  
Webbed Seat

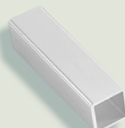


## Frame Tubing Options

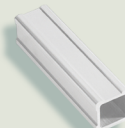
#09 FLUTE



#03 FLAT



#06 QUAD



#08 CONTOUR

