



Mesh Back

Model # 8341

FINE DINING WELDED STEEL FRAME



	Side Chair	Bar Stool
Overall Height	33.5"	43.5"
Overall Width	16.5"	16.5"
Overall Depth	19"	19"
Weight	18 lbs.	22 lbs.

Standard Features

- All welded construction - sturdy lightweight steel 18 Gauge frame
- 500 Lb. weight capacity
- Unlimited crypton & vinyl selections
- Meets CAL TB 117 fire rating
- CAL TB 133 fire rating available
- 2.5" Thick Padded Seat or Wood Seat
- Underseat curved support bar
- Plastic Floor Glides
- Powdercoated Frame

Description

Constructed to impress, the Mesh Back chair lends an industrial, yet stylish selection for any room. The sharp slick holes are what defines this chair, demonstrating a handcrafted look and feel. Your choice of a wood or vinyl seat enhance this already warm, home-like feel, and is sure to be a welcome addition to any seating arrangement.

This is a 100% welded frame! Backed by our industry leading 12 year warranty, this chair is environmentally friendly as well. Available with a matching bar stool.



SHEV

CHAIR

Visit Us Online
www.shevchair.com

Manufacturers of Contract Hotel Furnishings
 4800 W. Roosevelt Road, STE 201 - Chicago, IL 60644
 OFFICE: (888) 532-3910 FAX: (773) 261-2808
 Email: SALES@SHEVCHAIR.COM

Standard Beechwood Finishes



Cherry



Light Cherry



AB Cherry



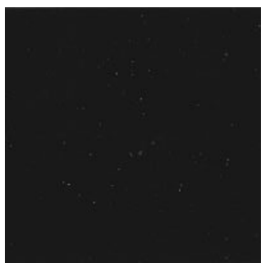
Walnut



Dark Walnut



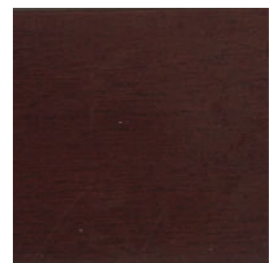
JITB



Black



Black Cherry



Mahogany



Natural



SHEV

CHAIR

Visit Us Online

» » » www.shevchair.com

Manufacturers of Contract Hotel Furnishings
4800 W. Roosevelt Road, STE 201 - Chicago, IL 60644
OFFICE: (888) 532-3910 FAX: (773) 261-2808
Email: SALES@SHEVCHAIR.COM