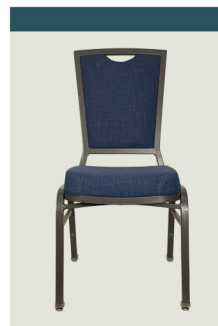


# ALUMINUM SIDE CHAIR

## 10-HIGH SERIES



**ALLANTE**  
Model # HC-427



Overall Height	37"	Stacks	10 High
Overall Width	18.25"	Seat Height	18.5"
Overall Depth	22.75"	Seat Width	15.25"
Arm Height	N/A	Seat Depth	18.25"
Weight	16 Lbs.	C.O.M. Seat/Back	0.9 yds (0.45 / 0.45)

### Standard Features

- 2 Side bars and 2 underseat bars for added support
- Completely welded aluminum alloy square tubing
- No exposed fasteners
- 12 Year Warranty
- Metal or Nylon, Clear Booted Swivel Glides
- Meets CAL TB 117 fire rating
- Optional Flex Back
- Optional Retractable Ganging
- Optional Webbed Seating
- Leg on leg stacking with 10 stack bumpers

### Description

Instantly recognizable for its sleek, straight lines, the Allante calls attention to itself for its uniqueness. With its straight plush padded seat, tapered back, flared back legs and an optional flex-back, the Allante is a stylish choice. This lightweight, aluminum stack chair comes with a built-in crumb hole, & the ability to stack 10 high.



Visit Us Online  
» » » [www.shevchair.com](http://www.shevchair.com)

**SHEV**  
CHAIR

Manufacturers of Contract Hotel Furnishings  
4800 W. Roosevelt Road, STE 201 - Chicago, IL 60644  
OFFICE: (888) 532-3910 FAX: (773) 261-2808  
Email: [SALES@SHEVCHAIR.COM](mailto:SALES@SHEVCHAIR.COM)



Optional  
Flex-Back  
for added  
comfort

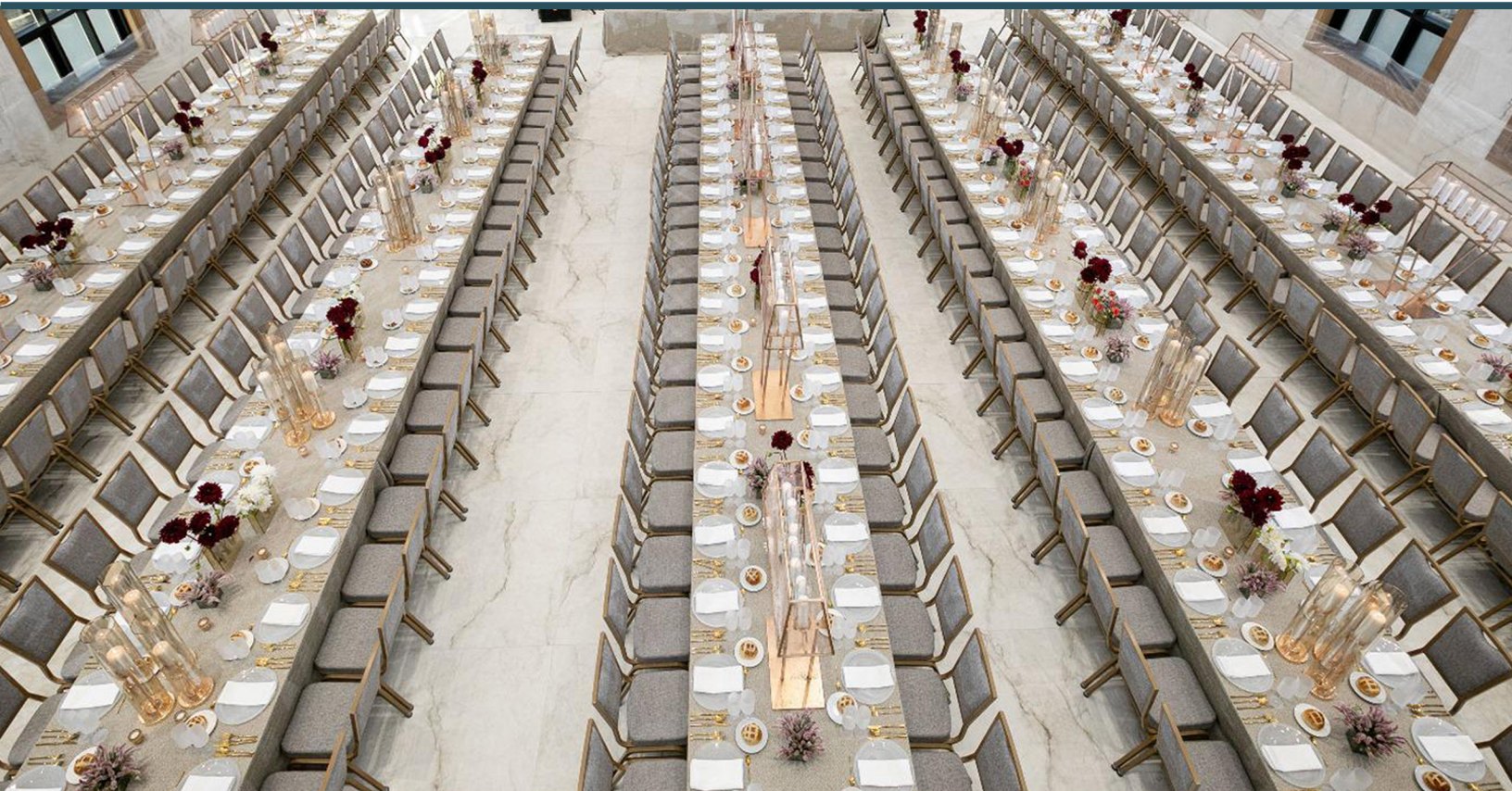


**Allante**  
Model # HC-427

Chose from  
over 20  
woodgrain  
finishes or 20  
powdercoat  
finishes!







Visit Us Online  
» » » [www.shevchair.com](http://www.shevchair.com)

**SHEV**  
— CHAIR —

Manufacturers of Contract Hotel Furnishings  
4800 W. Roosevelt Road, STE 201 - Chicago, IL 60644  
OFFICE: (888) 532-3910 FAX: (773) 261-2808  
Email: [SALES@SHEVCHAIR.COM](mailto:SALES@SHEVCHAIR.COM)





THE WESTIN HOTEL  
Itasca, IL



Visit Us Online  
» » » [www.shevchair.com](http://www.shevchair.com)

**SHEV**  
CHAIR

Manufacturers of Contract Hotel Furnishings  
4800 W. Roosevelt Road, STE 201 - Chicago, IL 60644  
OFFICE: (888) 532-3910 FAX: (773) 261-2808  
Email: [SALES@SHEVCHAIR.COM](mailto:SALES@SHEVCHAIR.COM)





Visit Us Online  
» » » [www.shevchair.com](http://www.shevchair.com)

**SHEV**  
— CHAIR —

Manufacturers of Contract Hotel Furnishings  
4800 W. Roosevelt Road, STE 201 - Chicago, IL 60644  
OFFICE: (888) 532-3910 FAX: (773) 261-2808  
Email: [SALES@SHEVCHAIR.COM](mailto:SALES@SHEVCHAIR.COM)





Visit Us Online  
» » » [www.shevchair.com](http://www.shevchair.com)

**SHEV**  
— CHAIR —

Manufacturers of Contract Hotel Furnishings  
4800 W. Roosevelt Road, STE 201 - Chicago, IL 60644  
OFFICE: (888) 532-3910 FAX: (773) 261-2808  
Email: [SALES@SHEVCHAIR.COM](mailto:SALES@SHEVCHAIR.COM)





Visit Us Online  
» » » [www.shevchair.com](http://www.shevchair.com)

**SHEV**  
— CHAIR —

Manufacturers of Contract Hotel Furnishings  
4800 W. Roosevelt Road, STE 201 - Chicago, IL 60644  
OFFICE: (888) 532-3910 FAX: (773) 261-2808  
Email: [SALES@SHEVCHAIR.COM](mailto:SALES@SHEVCHAIR.COM)





**SHEV**  
CHAIR

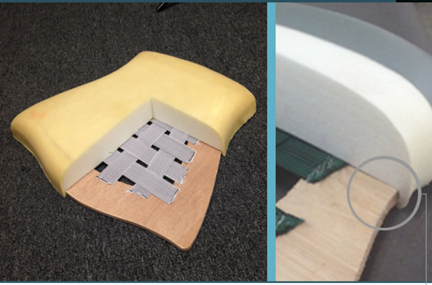
Visit Us Online  
» » » [www.shevchair.com](http://www.shevchair.com)

Manufacturers of Contract Hotel Furnishings  
4800 W. Roosevelt Road, STE 201 - Chicago, IL 60644  
OFFICE: (888) 532-3910 FAX: (773) 261-2808  
Email: [SALES@SHEVCHAIR.COM](mailto:SALES@SHEVCHAIR.COM)



# STANDARD OPTIONS

## High Density Molded Foam Cushions X



Shev Chair uses only Molded Foam for our seats. This higher density foam will not sag or shrink like standard foam does, and while soft to the touch, it still springs back to its original shape after standing up - every time.

The molded foam also completely surrounds the side of the wood panel inside the seat, ensuring that the material does not rub up against the wood directly, creating a safer touch, and lengthening the life of your material, as the wood splintering is one of the most common causes for frayed or torn material.

Standard on all Shev stack chairs, this specially formulated, emission-free highly resilient urethane foam offers exceptional comfort and meets flammability requirements of CAL. #117.

Optional upgrade available to meet CAL. # 133.

## Silhouette Style Back X



Silhouette Style Back refers to how the rear-facing part of the back is connected to the frame. Standard chairs use tabs with screws showing on the back of the chair, other chairs have screws that are fastened from the sides, again showing, and this can tear clothes when rubbing too close.

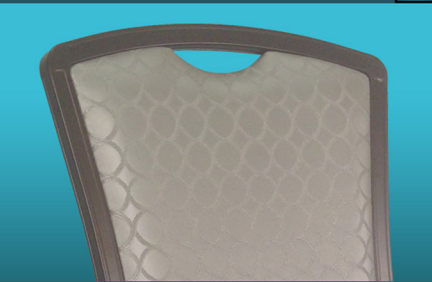
Our chairs utilize tabs inside the frame, which are hidden from view, and this gives you a nice clean and safe look.

## Contoured Seat Frame & Cushions X



Many Shev Chairs are now offered with a contoured seat, which adds yet another additional element of comfortability. These curved seats come standard, if shown in the picture. If you would like a different model to be made with a curved seat, please feel free to call us, as we love working on custom made seating!

## Full Hand-Hold X



A complete hand-hold allow chairs to be moved or lifted without touching the fabric of a chair.

This allows for quick and efficient setup and takedown, without compromising the aesthetics of the chair.

## Half Hand-Hold X



A half hand-hold allow chairs to be gripped by the frame, instead grabbing the actual fabric of a chair, while still keeping the full look on the front of the chair.

This allows for moving the chair in and out, and allows for quick and efficient setup and takedown, without compromising the aesthetics of the chair.



## Stacking Chairs X



These chairs stack by nesting one in the other. The legs from the chair above rest on the legs of the chair below, so that the stack remains sturdy as the qty. of chairs increases. Also, the cushions do not bear the weight load, but rather the welded frames.

Your staff can safely stack chairs 10-12 high, limiting the number of stacks needed. This saves both time and room.

## Premium Metal Swivel Glides X



Standard on most chairs, this metal based, rubber cushioned glide has a swivel which allows for a flat & horizontal connection between chair leg and floor, created for chair legs that rest on an angle.

Works great on hard surfaces, and slides well on carpet, due to it's nickel plated, polished steel base.

This double steel umbrella base ensures the glides won't ever fall out, ensuring you a lifetime of worry-free setups and takedowns.

## Premium Nylon Swivel Glides X



Standard on most chairs, this nylon based, rubber cushioned glide has a swivel which allows for a flat & horizontal connection between chair leg and floor, created for chair legs that rest on an angle.

Works great on hard surfaces, and slides well on carpet, due to it's nickel plated, polished steel base.

This double steel umbrella base ensures the glides won't ever fall out, ensuring you a lifetime of worry-free setups and takedowns.



Visit Us Online  
[www.shevchair.com](http://www.shevchair.com)

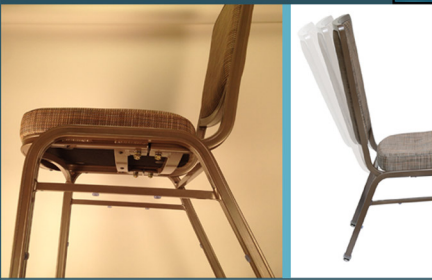
**SHEV**  
 CHAIR

Manufacturers of Contract Hotel Furnishings  
 4800 W. Roosevelt Road, STE 201 - Chicago, IL 60644  
 OFFICE: (888) 532-3910 FAX: (773) 261-2808  
 Email: [SALES@SHEVCHAIR.COM](mailto:SALES@SHEVCHAIR.COM)



# PREMIUM OPTIONS

## Endo-Flex® Back

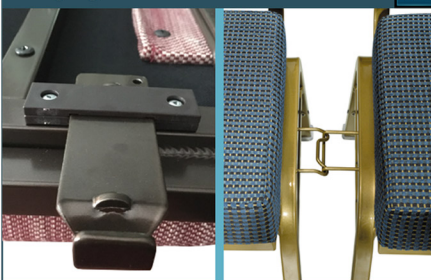


The Endo-Flex® mechanism is hidden under the seat of the chair, creating a look of a regular stack chair.

This device allows the back of the chair to flex, giving maximum comfort when sitting for extended periods of time.

Manufactured with premium grade aluminum, the flex piece is heat treated to allow for years of flexing without compromising the integrity of the frame structure.

## Ganging



Choose between a ganging option that is solid, or one that is wired.

These retractable mechanisms can safely be hidden out of sight.

The ganging devices allow chairs to be linked together for a theater style setting, creating a safer environment for faster entry and exit.

## Premium Webbed Seating



Made by interweaving flexible stretchbands, these rubberized polypropylene straps will add premium comfort for extended periods of sitting.

Completely hidden inside the seat cushion, your guests will experience the ultimate in seating comfort.

## Welt Cord



Add a welt cord to your chair, either on the seat, the back, or both.

## Seat Style Options



Ergo-Stitch

Arched

Puled

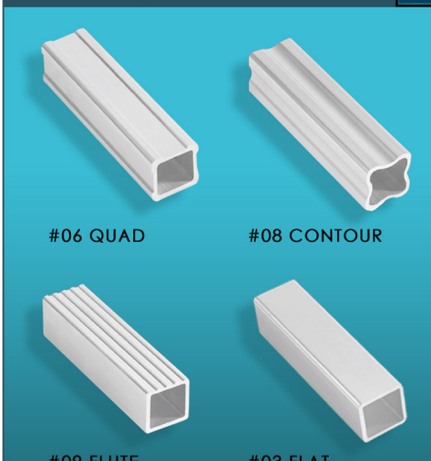
Boxed

Waterfall

You can now customize your Shev Chair even more, by choosing from a few different styles of seat cushions for your frames.

Each chair is shown in the standard seating cushion option that it comes in, but you can change it to your liking!

## Frame Tubing Options



#06 QUAD

#08 CONTOUR

#09 FLUTE

#03 FLAT

You can now customize your Shev Chair even more, by choosing from a few different styles of tubing for your frames.

Each chair is shown in the standard tubing option that it comes in, but you can change it to your liking!

## Premium Teflon Sliders

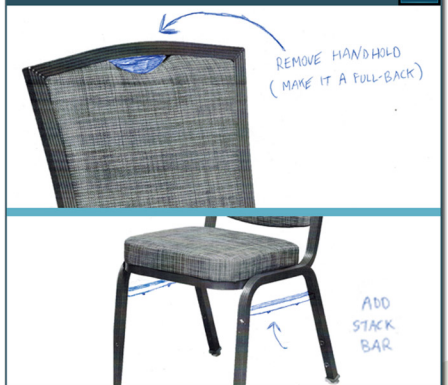


As an option for any chairs that carry a metal swivel glide, these "Magic Sliders" lessen the strain for your setup staff to move the chairs across the room.

It also extends the life of your chair, as there is now less stress to the legs when sliding the chairs along a carpeted floor.

Available as an add-on, you can simply attach the slider to your existing metal glide, and it stays on by itself, no tools needed.

## Custom Options



We love working with our customers, and hearing about new features and requests!

As the manufacturer of all of our products, we take pride in the fact that we can, and are willing to fully customize our chairs to your exact needs.

Please call us with any questions, and we will be glad to assist you!



Visit Us Online  
[www.shevchair.com](http://www.shevchair.com)

**SHEV**  
 CHAIR

Manufacturers of Contract Hotel Furnishings  
 4800 W. Roosevelt Road, STE 201 - Chicago, IL 60644  
 OFFICE: (888) 532-3910 FAX: (773) 261-2808  
 Email: [SALES@SHEVCHAIR.COM](mailto:SALES@SHEVCHAIR.COM)