

Model  
# HC-7025

# CHURCH CHAIRS

## Deluxe Padded Back

WELDED FRAME



	Side Chair	Arm Chair
Overall Height	35"	35"
Seat Width	20" or 22"	20" or 22"
Overall Depth	26.5"	26.5"
Seat Height	18.5"	18.5"

### Standard Features

- 100% Made in the U.S.A.
- Zero Maintenance Seat - No loose screws on the floor with the innovative Flex-Fit™ blow-molded seat and Fit-Tight™ fastening system with self-tightening BosScrew™.
- Unmatched Comfort - The contoured Ergo-V back acts in perfect concert with the Flex-Fit™ seat's contoured S-shape saddle with our exclusive 2 lb. BLUE foam cushioning and rolled front seat to create all day comfort.
- Industry's Strongest Frame - Radius 16 gauge 1010 cold rolled steel with integrated solid Torsion Bar System. Also available with the Stackable Arm Configuration as the built-In Lumbar Support
- Finish - Ultra-Durable Powder-coat electrostatically applied and baked at over 400 degrees. Saltwater tested to over 800 hours. Both standard and designer finishes available. Chrome and brass plating also available. Unlimited Crypton and Vinyl selections
- 1000 lbs. weight capacity - LIFETIME warranty on frame
- Stack Bumpers to prevent scratches



**SHEV**  
CHAIR

Visit Us Online  
» » » [www.shevchair.com](http://www.shevchair.com)

Manufacturers of Contract Hotel Furnishings  
4800 W. Roosevelt Road, STE 201 - Chicago, IL 60644  
OFFICE: (888) 532-3910 FAX: (773) 261-2808  
Email: SALES@SHEVCHAIR.COM

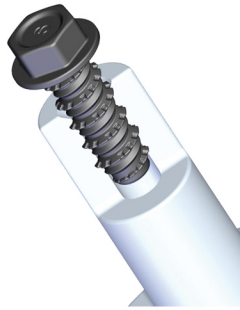


# SHEV

— CHAIR —

Visit Us Online  
» » » [www.shevchair.com](http://www.shevchair.com)

Manufacturers of Contract Hotel Furnishings  
4800 W. Roosevelt Road, STE 201 - Chicago, IL 60644  
OFFICE: (888) 532-3910 FAX: (773) 261-2808  
Email: SALES@SHEVCHAIR.COM



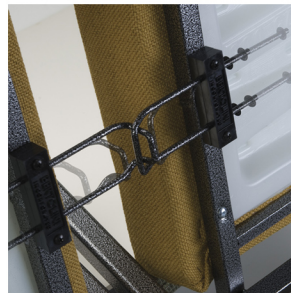
#### Boss-screw Technology

The new Fit-Tight fastening system with BosScrew means screws tighten over time and NEVER fall out.



#### Easy-Use Interlocks

Straight interlocks hold chairs tightly together, while radius interlocks allow enough space to form a gentle curve. Available as an add-on.



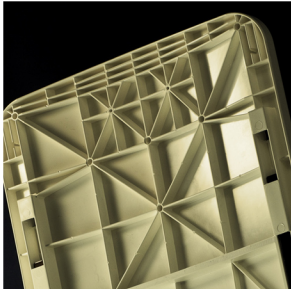
#### Retractable Interlocks

Retractable Interlocks easily mount under your chair to provide linking of chairs into rows; retractable when not in use.



#### Arms

Optional arms create easy access for the disabled, yet still allow for stacking.



#### Ergo-V Back Support

Patent-pending Ergo-V Support System provides ergonomic comfort and more durability than plywood.



#### BIFMA Tested

Our chairs meet and exceed the highest standards in the furniture industry.



#### Premium Virgin Foam

Others use recycled foam with fillers. We only use 100% Commercial Grade virgin foam ensuring lasting comfort.



#### Upgraded Foam

Our 2 LB Blue Commercial Grade Foam wrapped around a base of 3 LB High Resiliency Foam



#### iPad/Communion Cup Holder

Provides room for 2 pens/ pencils, business cards, communion cups and tablets up to 8.75" wide.



#### Welded Book-Rack

This design has an accessible communion cup loop integrated right in. Directly welded from the factory for convenient access to books.



#### Coffee Cup Holder

The Add-on Coffee Cup Holder is a wire loop designed to easily mount underneath your church chair. Made in the USA.



#### Communion Cup Holder

Individualized to keep empty cups off the floor: Available as an add-on option for some models.



#### 5-Stage Powdercoat (far left)

Our 5-stage powdercoat system creates a durable finish that will never crack, peel, or rust.



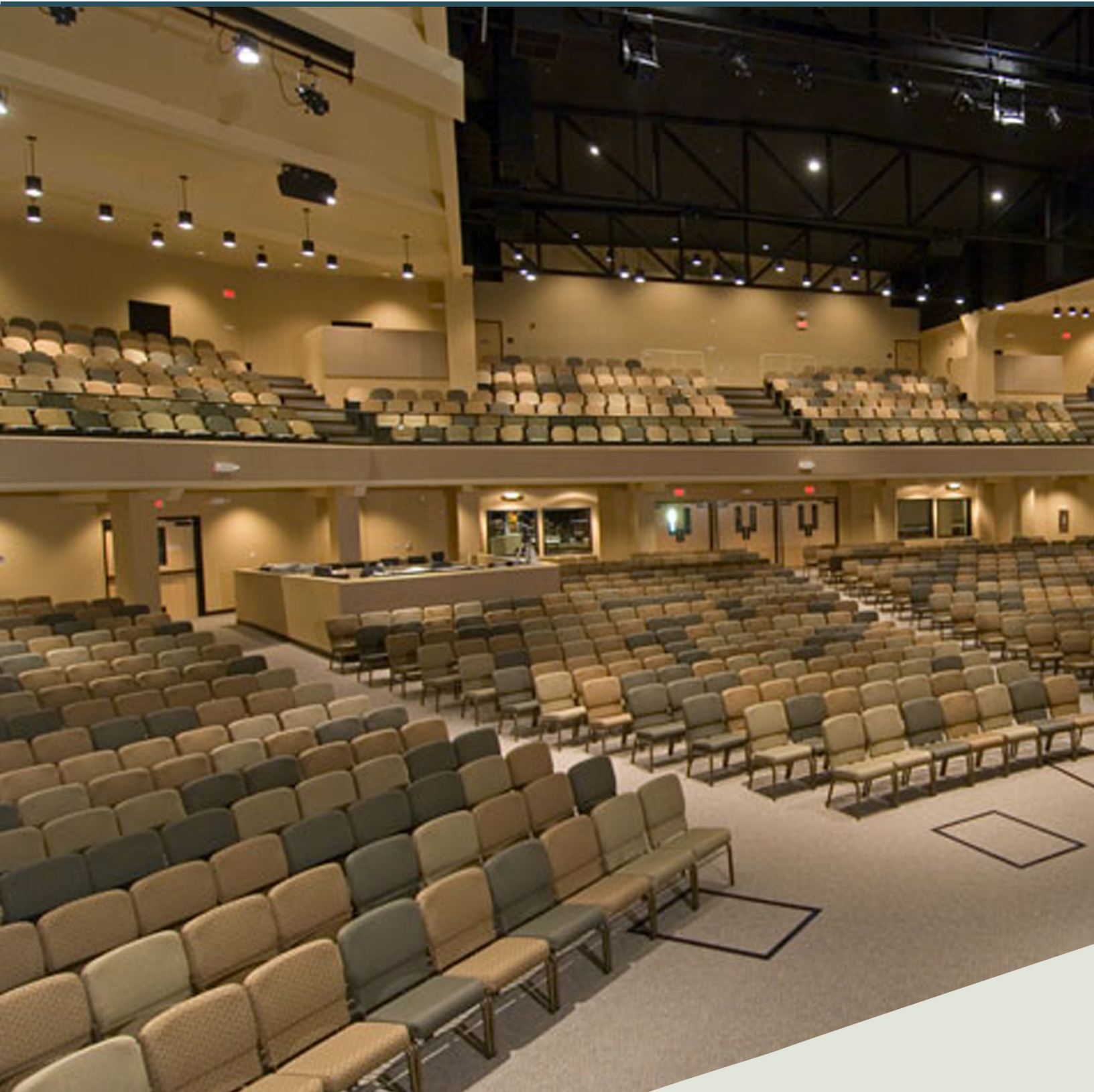
#### Ultra Strong Frame (left)

Our frames can handle static loads of over 1000 lbs!



Visit Us Online  
www.shevchair.com

Manufacturers of Contract Hotel Furnishings  
4800 W. Roosevelt Road, STE 201 - Chicago, IL 60644  
OFFICE: (888) 532-3910 FAX: (773) 261-2808  
Email: SALES@SHEVCHAIR.COM



# SHEV

— CHAIR —

Visit Us Online  
» » » [www.shevchair.com](http://www.shevchair.com)

Manufacturers of Contract Hotel Furnishings  
4800 W. Roosevelt Road, STE 201 - Chicago, IL 60644  
OFFICE: (888) 532-3910 FAX: (773) 261-2808  
Email: SALES@SHEVCHAIR.COM

### Fully Upholstered Outer Back

The fully upholstered back provides superior comfort, durability, sound absorption, and a refined look.

### Fabric

Choose from more than 50 standard fabrics and hundreds of designer fabrics with C.O.M. (Customer's Own Material) option (allow 0.8-1.1 yards of standard width fabric).

### Strongest Frame

The 16-gauge bar system features carbon steel with integrated torsion that provides extra strength and extends the life of the chair.

### Finish

The ultra durable powder-coat is electro-statically applied and baked at over 400°, and then saltwater tested for more than 800 hours for proven longevity.



### Ergo-V Ergonomic Back Foundation

Multi-contoured V-shape back that supports the lower back and cradles the upper shoulders

### Zero-Maintenance Durable Seat

Zero maintenance means screws never fall out, and you will not have to replace parts—ever.

### Exclusive Dual-Density Foam

The commercial grade foam ensures all-day comfort and resiliency for the life of the chair.

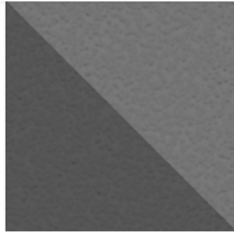
### Stack Buttons

The extra-wide stack buttons for efficient stacking help protect your investment.

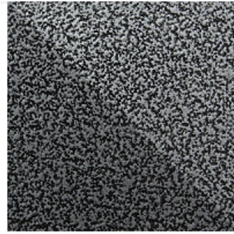
## STANDARD FINISHES



Enviro Black



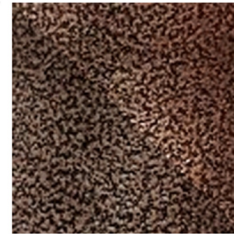
Grey Hammer



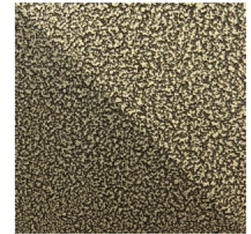
Silver Vein



Bronze Vein

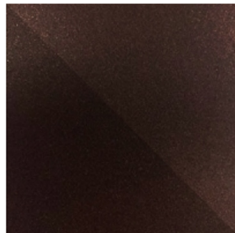


Copper Vein

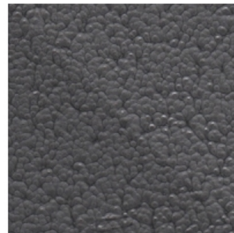


Gold Vein

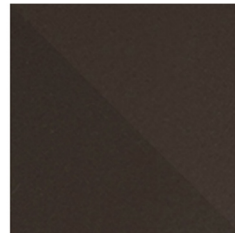
## DESIGNER FINISHES



Java



Charcoal Hammertone



Architectural Bronze



007 Silver



Visit Us Online  
www.shevchair.com

Manufacturers of Contract Hotel Furnishings  
4800 W. Roosevelt Road, STE 201 - Chicago, IL 60644  
OFFICE: (888) 532-3910 FAX: (773) 261-2808  
Email: SALES@SHEVCHAIR.COM



# SHEV

CHAIR

Visit Us Online  
[www.shevchair.com](http://www.shevchair.com)

Manufacturers of Contract Hotel Furnishings  
4800 W. Roosevelt Road, STE 201 - Chicago, IL 60644  
OFFICE: (888) 532-3910 FAX: (773) 261-2808  
Email: SALES@SHEVCHAIR.COM